

Culture, Heritage and Identities: impacts of climate change in NW Europe (CHICC)

Dr Sarah Kerr (Marie Curie Fellow, Aarhus University)

Abstract: Climate change is considered a dominant threat to built heritage lining the Atlantic and North Sea coasts of Europe, particularly increased storm activity and sea-level rise impacting Denmark, Ireland and Scotland. While increases in the severity and incidence of extreme weather events are predicted for these regions, the principal narrative enshrined in governmental response comprises preservation and methods to do so. This paper introduces CHICC, a project exploring the relationship between climate change, archaeology, and the community through the creation of long-term environmental and cultural narratives. It will discuss the step away from ideals of preservation and examine insights on heritage loss and climate resilience

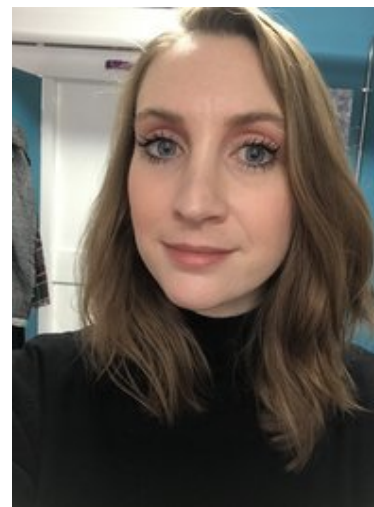
This Virtual Seminar will be held on Zoom: <https://aarhusuniversity.zoom.us/j/61020662540>



Biography: Sarah Kerr

(Marie Curie Fellow, Aarhus University)

Sarah Kerr joined the Department of Archaeology and Heritage Studies in February 2021 as an MSCA Fellow. She was previously a lecturer in Cultural Heritage Management at the University of Sheffield and held postdoctoral appointments at Trinity College Dublin and Katholieke Universiteit Leuven. She is currently on (virtual) secondment at the University of St Andrews as part of her CHICC research.



INSTITUT FOR
KULTUR OG SAMFUND
AARHUS UNIVERSITET

MATERIALS,
CULTURE AND
HERITAGE